

PURLINS AND GIRTS – APPENDIX 2

FABRICATION DETAILS (ORDER FORM) – DRAWINGS SUPPLIED BY CANAM CANADA

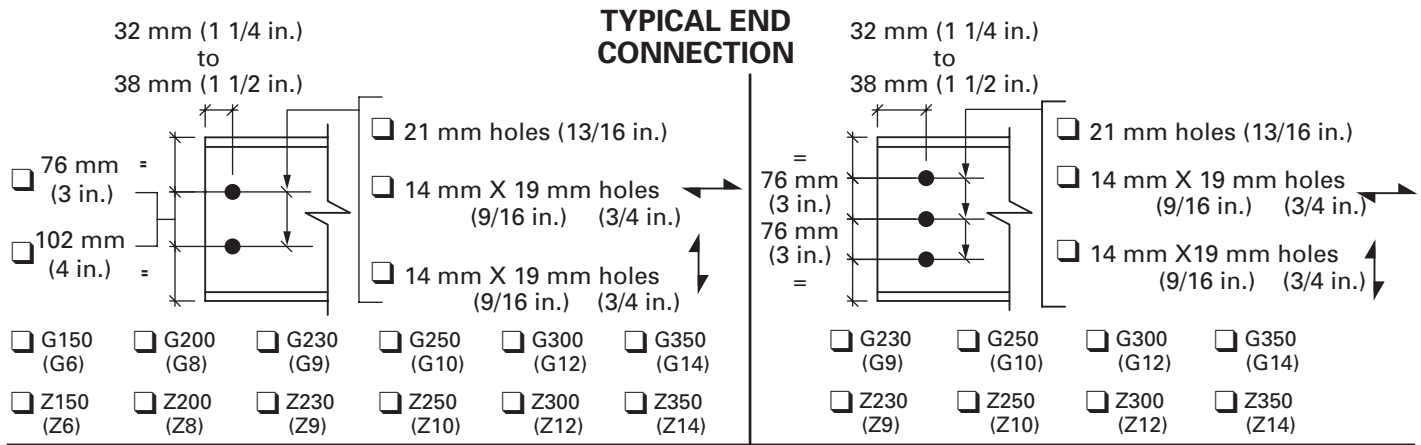
You can download this form on the Canam Canada website at www.canam.ws/technical publications.
Please return the completed form either by fax to **450-641-8769** or by email to gedeon.dessin@canam.ws.

Date: _____

Company: _____

Contact person: _____ Telephone: _____

Project name: _____ Email: _____



PRIMER:

None

Grey

Red

A ⊗ IS

GIRT LINE: _____ (exterior side)

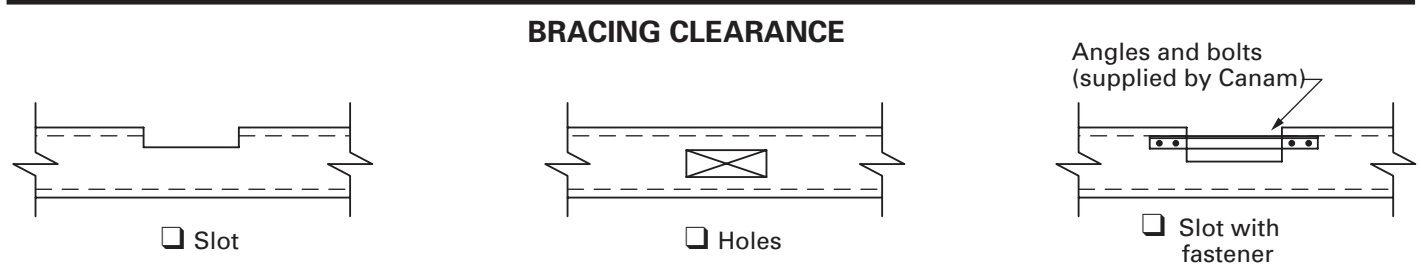
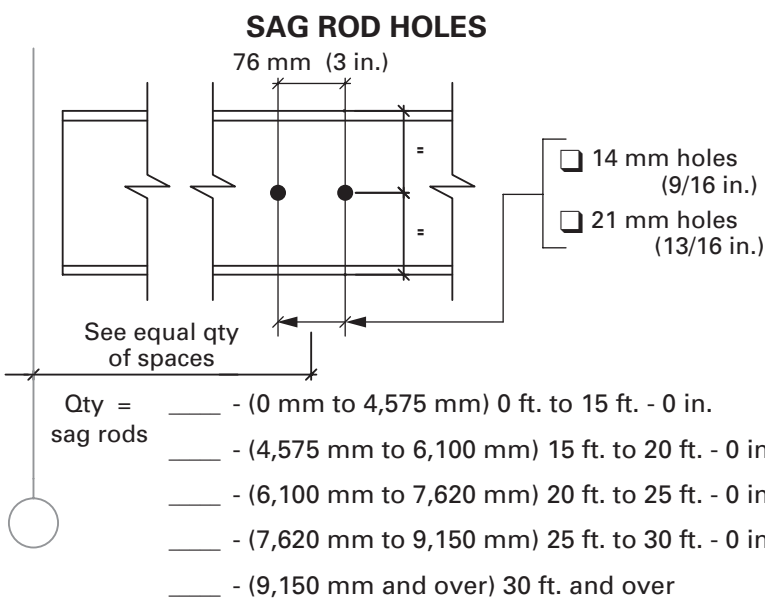
POSITION OF BRACING:

In the axis

Facing interior column

Facing exterior column

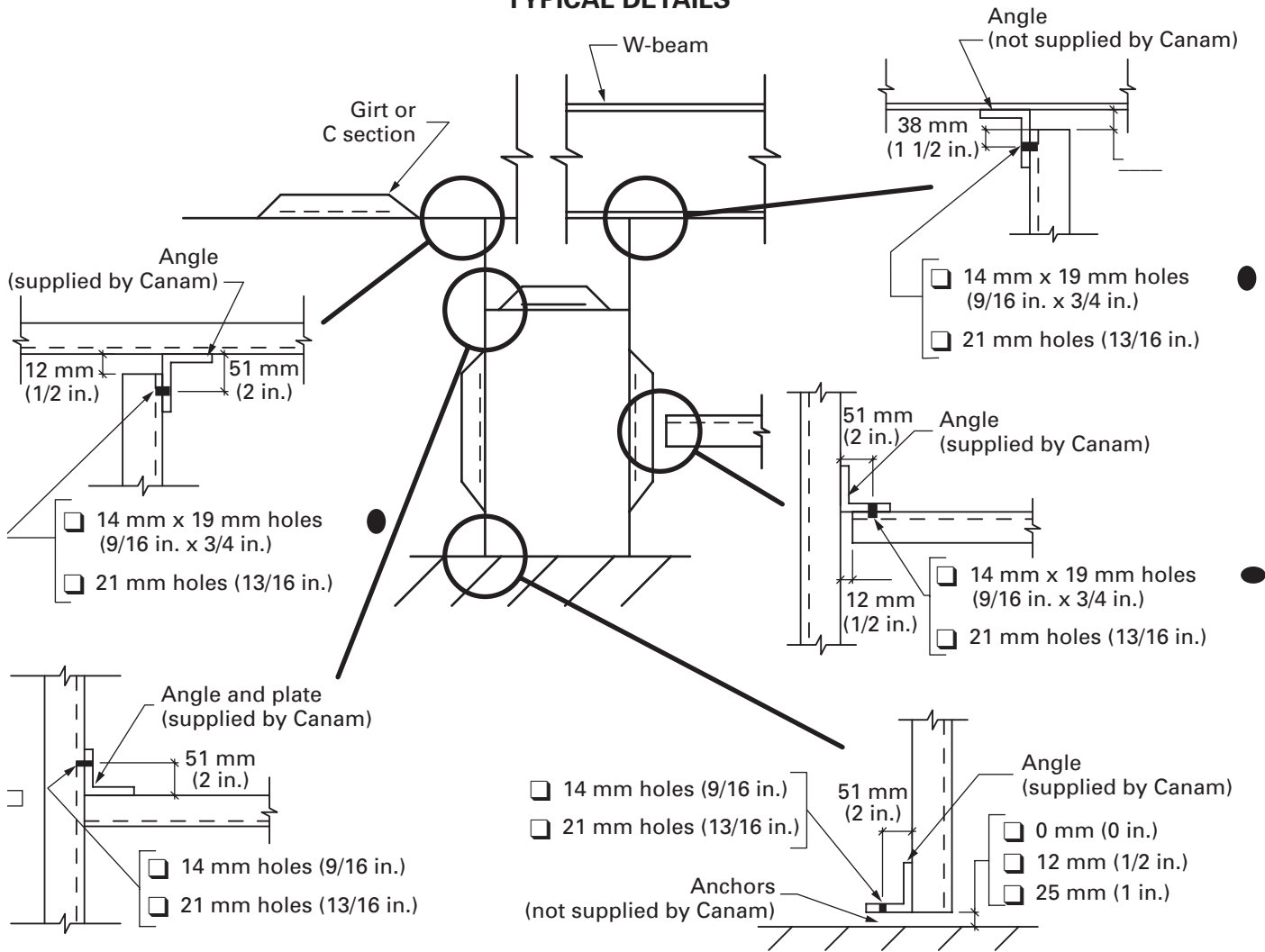
Other: _____



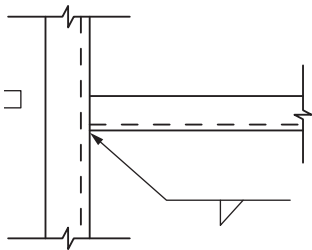
NOTES:

- The purlin and girt extremities will be cut at a 90° angle (blown insulation excluded on columns).
- For connections other than those presented above, please contact Canam Canada.
- Unless specified otherwise, bolts are not supplied by Canam Canada.

TYPICAL DETAILS



OR



GIRT TO COLUMN CONNECTION DETAILS

